

This story was made with [Esri's Story Map Cascade](#).

Read it on the web at <https://arcg.is/10j5OK>.



A Story Map

Using Cityworks to Manage Stormwater Operations

Tom Maggard - INAFSM 2019 Conf

Empowering GIS



INTRO



Today I will go over the following in this presentation:

- Brief explanation of Cityworks
- AMS and how Stormwater utilizes
- PLL and how Stormwater utilizes
- How AMS & PLL work together
- Questions

What is Cityworks?

 [Request a Demo 801-523-2751 \(https://www.cityworks.com/contact-us/\)](https://www.cityworks.com/contact-us/)



[MyCityworks Login \(https://mycityworks.force.com/s/login/\)](https://mycityworks.force.com/s/login/)

[Contact Us \(https://www.cityworks.com/contact-us/\)](https://www.cityworks.com/contact-us/)



<https://www.cityworks.com>

[Products \(https://www.cityworks.com/products/\)](https://www.cityworks.com/products/)

[Solutions \(https://www.cityworks.com/solutions/\)](https://www.cityworks.com/solutions/)

[Industries \(https://www.cityworks.com/industries/\)](https://www.cityworks.com/industries/)

[Partners \(https://www.cityworks.com/partners/\)](https://www.cityworks.com/partners/)

[Resources \(https://www.cityworks.com/resources/\)](https://www.cityworks.com/resources/)

[Events \(https://www.cityworks.com/events/\)](https://www.cityworks.com/events/)

[Company \(https://www.cityworks.com/about-us/\)](https://www.cityworks.com/about-us/)

[Community \(https://www.cityworks.com/community/\)](https://www.cityworks.com/community/)

In order to give you the best experience, our website uses cookies. By continuing to use this site, you agree to our use of cookies. **Accept**

Website: <https://www.cityworks.com/products/>

2 Main Components of Cityworks

📞 Request a Demo 801-523-2751 (<https://www.cityworks.com/contact-us/>)



MyCityworks Login (<https://mycityworks.force.com/s/login/>)

Contact Us (<https://www.cityworks.com/contact-us/>)



(<https://www.cityworks.com>)

Products (<https://www.cityworks.com/products/>)

Solutions (<https://www.cityworks.com/solutions/>)

Industries (<https://www.cityworks.com/industries/>)

Partners (<https://www.cityworks.com/partners/>)

Resources (<https://www.cityworks.com/resources/>)

Events (<https://www.cityworks.com/events/>)

Company (<https://www.cityworks.com/about-us/>)

Community (<https://www.cityworks.com/community/>)

Cityworks AMS

In order to give you the best experience on our website, we use cookies. By continuing to use this site, you agree to our use of cookies. **Accept**

Website: <https://www.cityworks.com/products/cityworks-ams/>

AMS has 3 fundamental parts:

SERVICE REQUESTS

WORK ORDERS

INSPECTIONS

 [Request a Demo 801-523-2751 \(https://www.cityworks.com/contact-us/\)](https://www.cityworks.com/contact-us/)



[MyCityworks Login \(https://mycityworks.force.com/s/login/\)](https://mycityworks.force.com/s/login/)

[Contact Us \(https://www.cityworks.com/contact-us/\)](https://www.cityworks.com/contact-us/)



<https://www.cityworks.com>

[Products \(https://www.cityworks.com/products/\)](https://www.cityworks.com/products/)

[Solutions \(https://www.cityworks.com/solutions/\)](https://www.cityworks.com/solutions/)

[Industries \(https://www.cityworks.com/industries/\)](https://www.cityworks.com/industries/)

[Partners \(https://www.cityworks.com/partners/\)](https://www.cityworks.com/partners/)

[Resources \(https://www.cityworks.com/resources/\)](https://www.cityworks.com/resources/)

[Events \(https://www.cityworks.com/events/\)](https://www.cityworks.com/events/)

[Company \(https://www.cityworks.com/about-us/\)](https://www.cityworks.com/about-us/)

[Community \(https://www.cityworks.com/community/\)](https://www.cityworks.com/community/)

Asset Management

In order to give you the best experience on our website, we use cookies. By continuing to use this site, you agree to our use of cookies. **Accept**

Website: <https://www.cityworks.com/solutions/asset-management/>

2 Main Components of Cityworks

Request a Demo 801-523-2751 (<https://www.cityworks.com/contact-us/>)



MyCityworks Login (<https://mycityworks.force.com/s/login/>)

Contact Us (<https://www.cityworks.com/contact-us/>)



(<https://www.cityworks.com>)

Products (<https://www.cityworks.com/products/>)

Solutions (<https://www.cityworks.com/solutions/>)

Industries (<https://www.cityworks.com/industries/>)

Partners (<https://www.cityworks.com/partners/>)

Resources (<https://www.cityworks.com/resources/>)

Events (<https://www.cityworks.com/events/>)

Company (<https://www.cityworks.com/about-us/>)

Community (<https://www.cityworks.com/community/>)

Cityworks PLL

In order to give you the best experience, our website uses cookies. By continuing to use this site, you agree to our use of cookies. **Accept**

Website: <https://www.cityworks.com/products/cityworks-pll/>

Request a Demo 801-523-2751 (<https://www.cityworks.com/contact-us/>)



MyCityworks Login (<https://mycityworks.force.com/s/login/>)

Contact Us (<https://www.cityworks.com/contact-us/>)



(<https://www.cityworks.com>)

Products (<https://www.cityworks.com/products/>)

Solutions (<https://www.cityworks.com/solutions/>)

Industries (<https://www.cityworks.com/industries/>)

Partners (<https://www.cityworks.com/partners/>)

Resources (<https://www.cityworks.com/resources/>)

Events (<https://www.cityworks.com/events/>)

Company (<https://www.cityworks.com/about-us/>)

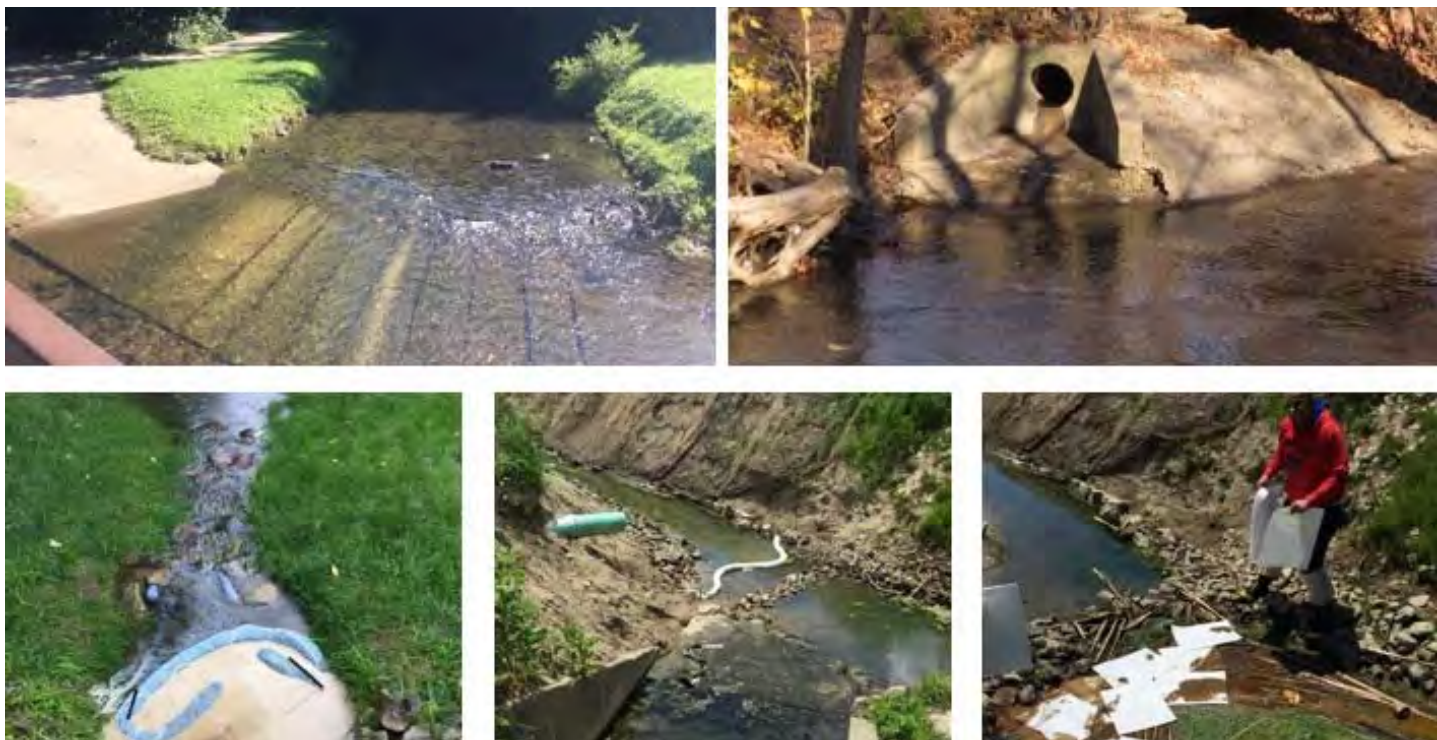
Community (<https://www.cityworks.com/community/>)

Permits and Licensing

In order to give you the best experience, our website uses cookies. By continuing to use this site, you agree to our use of cookies. **Accept**

Website: <https://www.cityworks.com/solutions/permits-licensing/>

How does Greenwood Stormwater use AMS & PLL



Greenwood Cityworks test site (link: https://cityworks.greenwood.in.gov/Cityworks_Test/Login.aspx)

QUESTIONS



<mailto:maggardt@greenwood.in.gov>

Tom Maggard Contact Info

[Email](mailto:maggardt@greenwood.in.gov) (link: mailto:maggardt@greenwood.in.gov)

[LinkedIn](https://www.linkedin.com/in/tom-maggard-22061016/) (link: https://www.linkedin.com/in/tom-maggard-22061016/)

[Twitter](https://twitter.com/tommaggard)

(link: https://twitter.com/tommaggard)