

USACE WATER RESOURCES PROGRAMS & AUTHORITIES

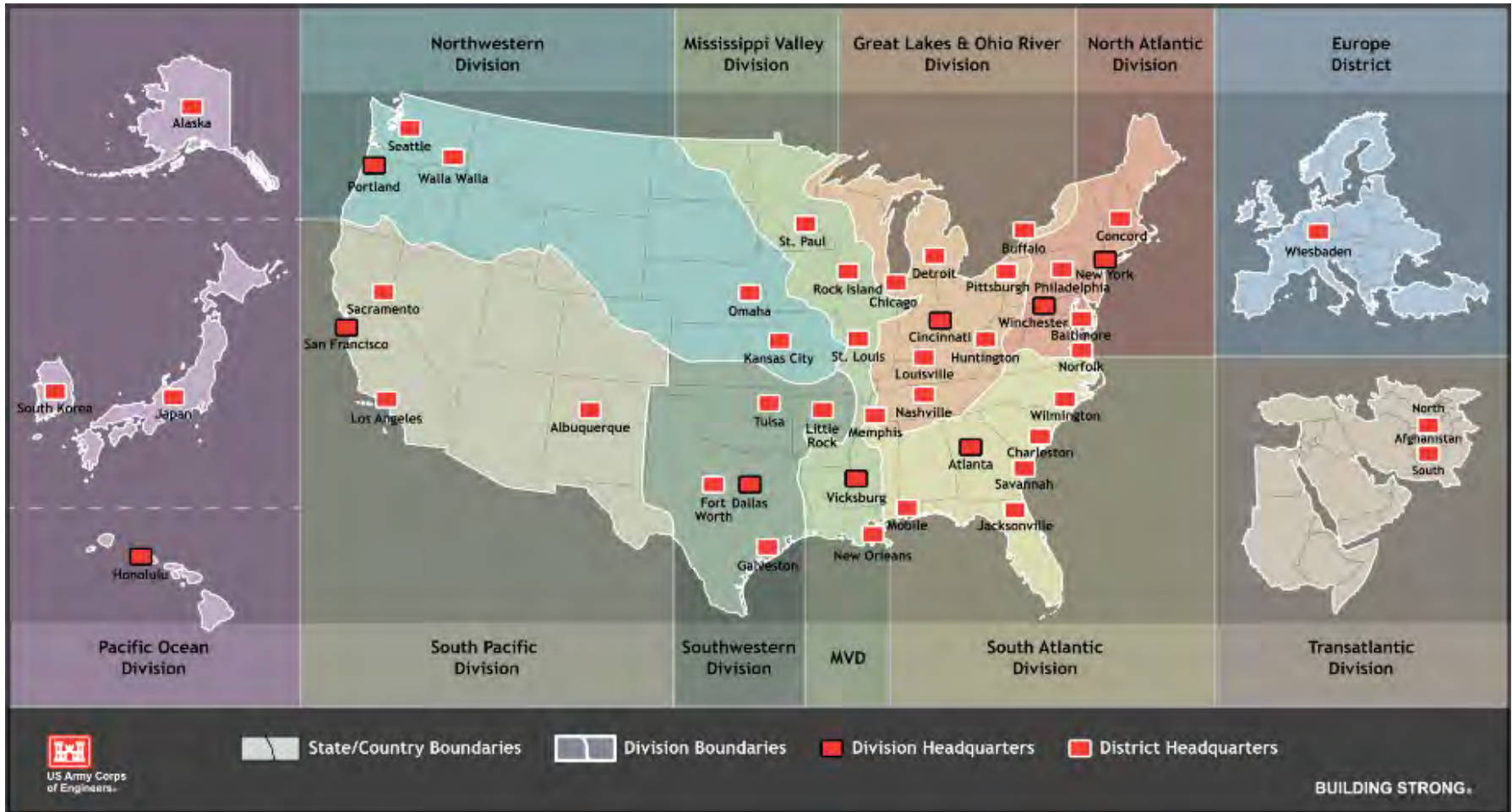
Brandon R. Brummett, P.E., PMP
Outreach Coordinator



US Army Corps
of Engineers®



USACE DISTRICTS





Assistant Secretary of
the Army (Civil Works)
Washington, DC



USACE Headquarters
Washington, DC



Great Lakes & Ohio
River Division
Cincinnati, OH
(9 Divisions)



Louisville District
Louisville, KY
(43 Districts)





LOUISVILLE DISTRICT MISSIONS



- **Civil Works Missions**

- 20 lake projects: 8 in Kentucky, 8 in Indiana and 4 in Ohio
- 9 total locks and dams: 7 on the Ohio River (including Olmsted), 2 on Green River

- **Support to Military Customers**

- US Army & US Air Force
- US Army & Air Force Reserve

- **Support to other Federal Agencies**

- VA
- EPA
- FEMA
- Others

- **Environmental Missions**

- FUDS
- IRP
- BRAC

- **Other Missions**

- Emergency Management
- Real Estate





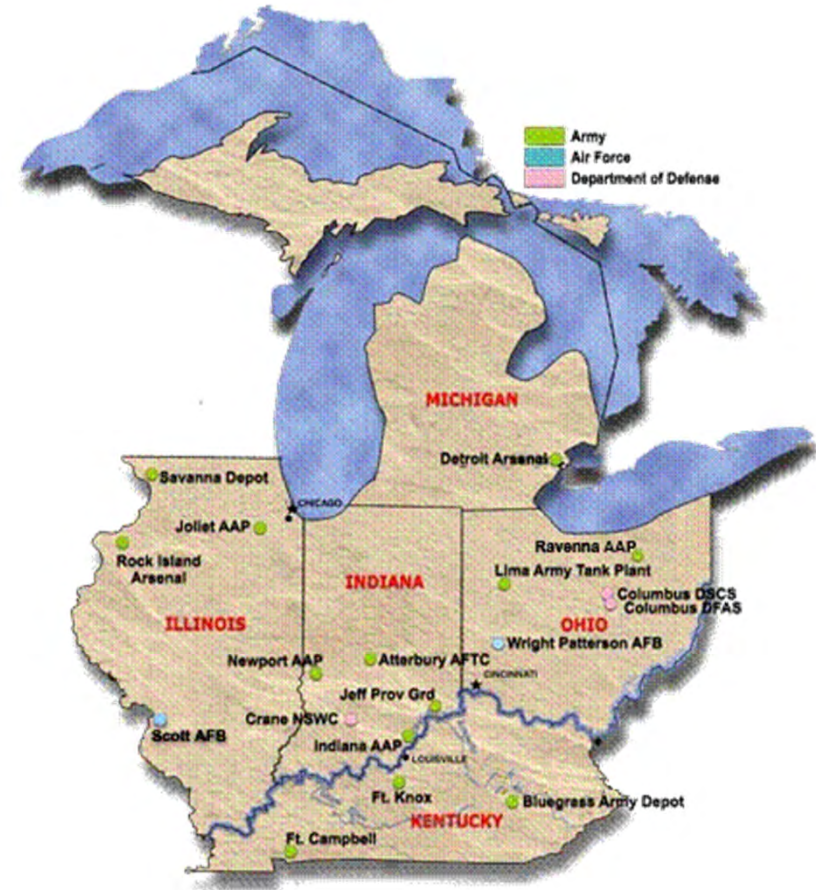
LRL MILITARY PROGRAM



The LRL Military program covers more than 306,000 square miles and supports the Army, Air Force and other Department of Defense agencies in 5 states (IN, IL, OH, MI and KY).

Installations Served:

- Fort Knox, KY
- Fort Campbell, KY
- Wright-Patterson AFB, OH
- Scott AFB, IL
- Rock Island Arsenal, IL
- Detroit Arsenal, MI



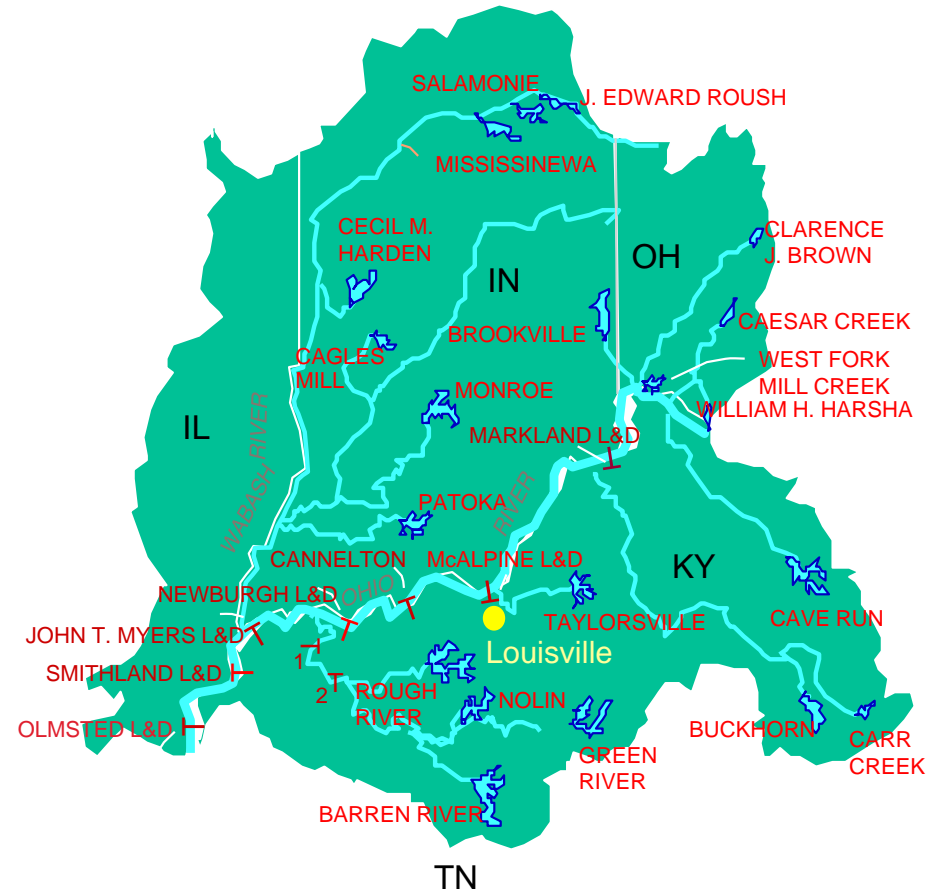


LRL CIVIL WORKS PROGRAM



The LRL Civil Works program is based on watershed boundaries and covers over 76,000 square miles in 5 states (IN, IL, OH, MI and KY).

The civil works program focuses on responsible development, protection, and restoration of the nation's water and land resources.



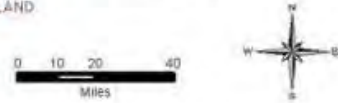


US Army Corps of Engineers®

USACE Lakes and Rivers Division District Boundaries of Indiana



-  LRD Locks and Dams
-  LRD Reservoirs
-  State Capital
-  Cities (Pop. > 50,000)
-  Ohio River
-  Stream
-  County Line



Source: USACE and ESRI



OHIO RIVER MAINSTEM NAVIGATION SYSTEM

General Plan and Profile





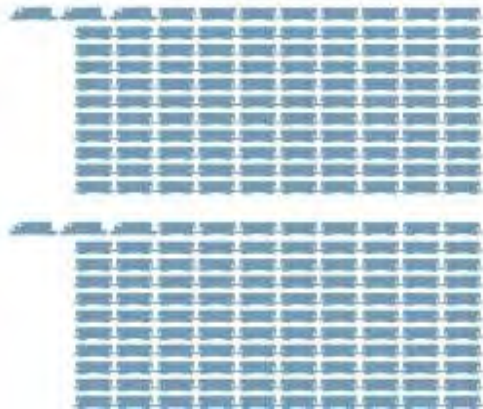
HOW MUCH?



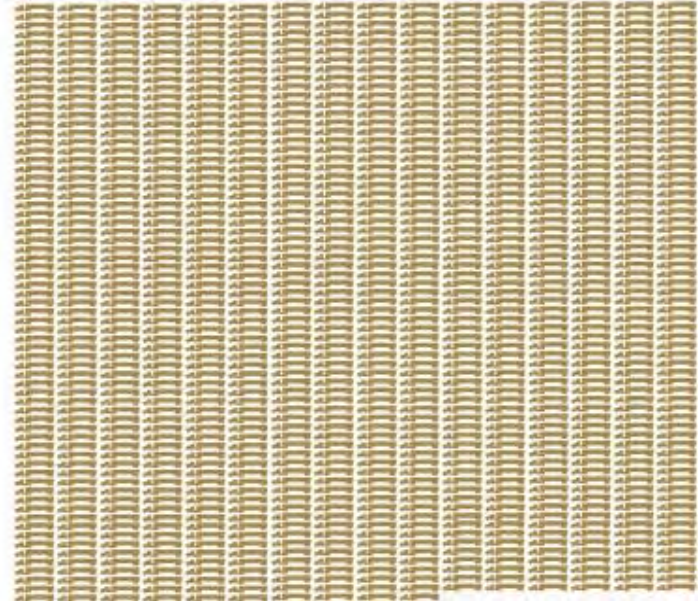
One 15-Barge Tow



216 Rail Cars + 6 Locomotives



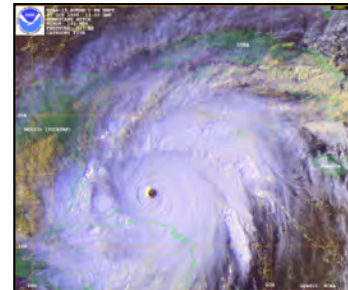
1,050 Large Semi Tractor-Trailers





CIVIL WORKS MISSIONS

- Navigation
- Flood and Storm Risk Management
- Aquatic Ecosystem Restoration
- Watershed Planning
- Emergency Management
- Regulatory Program
- *Hydropower*
- *Recreation*





Authorization & Appropriation



Authorization

- Permission for Study, program, or project
- Water Resources Development Act (WRDA)
- Committee resolution

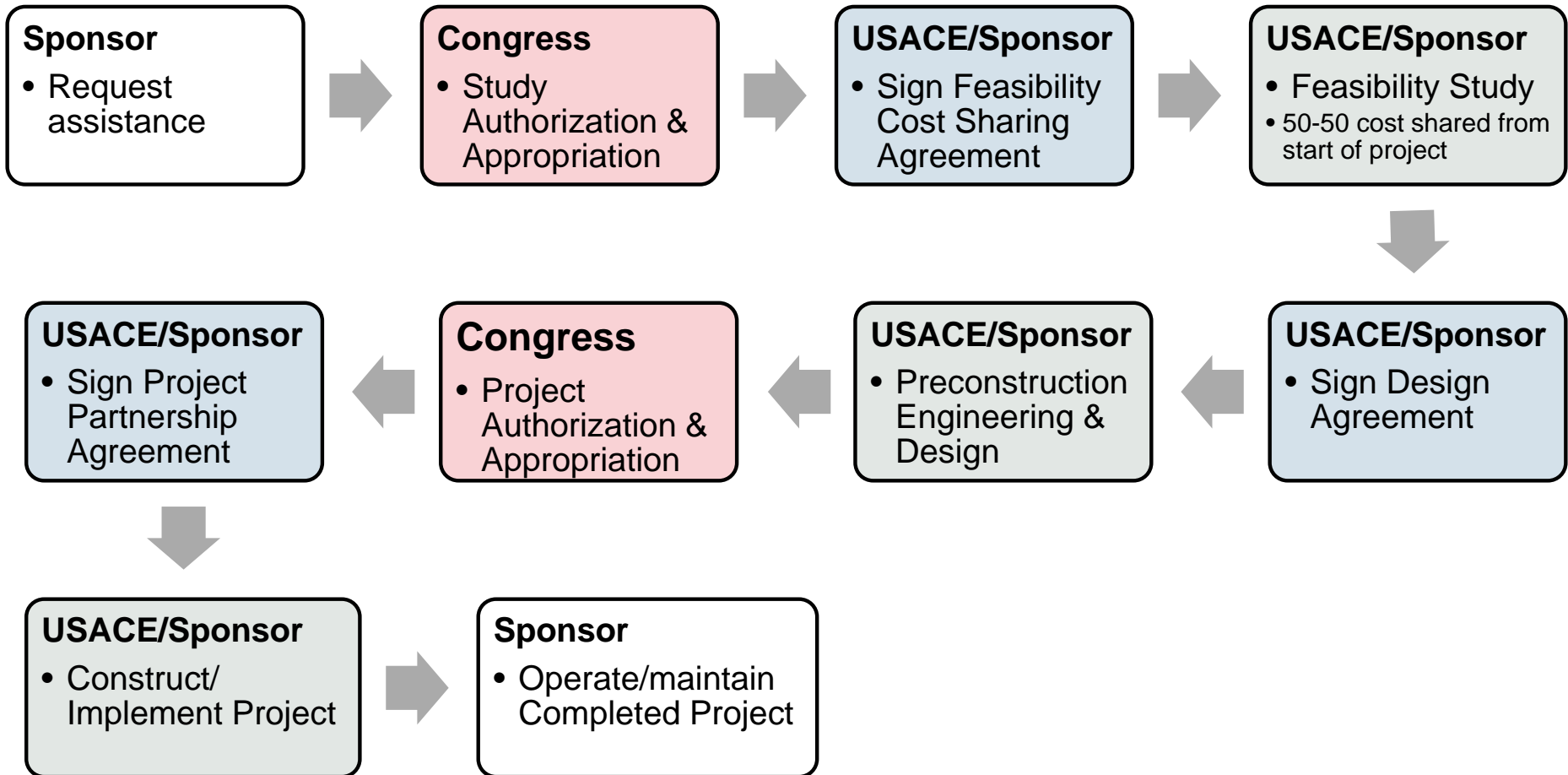
Appropriation

- Approval to obligate and expend funds for an authorized study program, or project
- Annual Energy & Water Development Appropriation Act (EWDA)



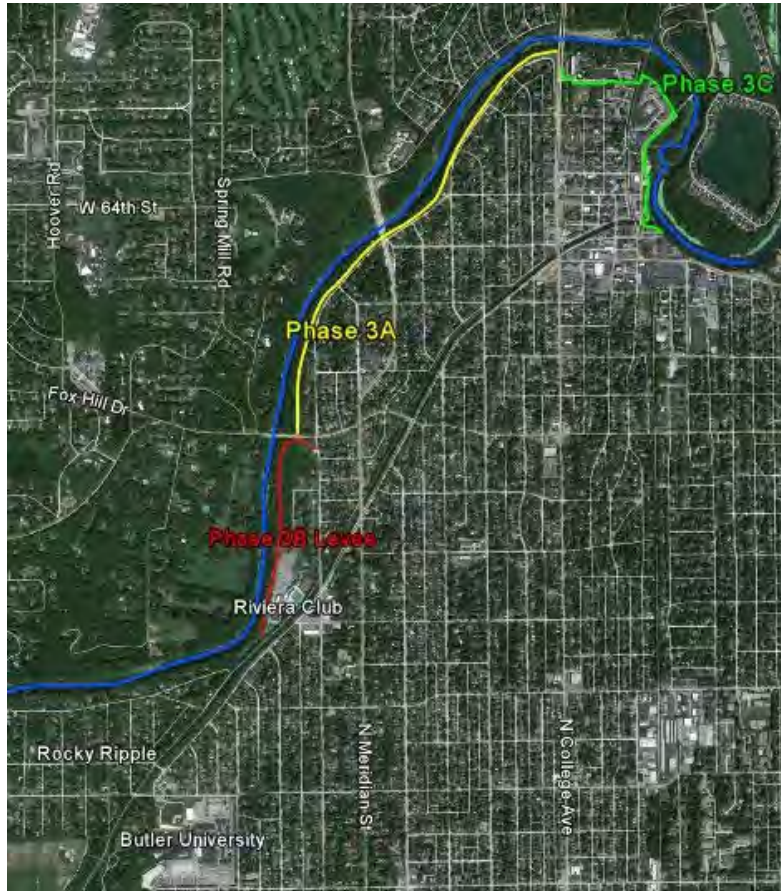


Specifically Authorized Project Process



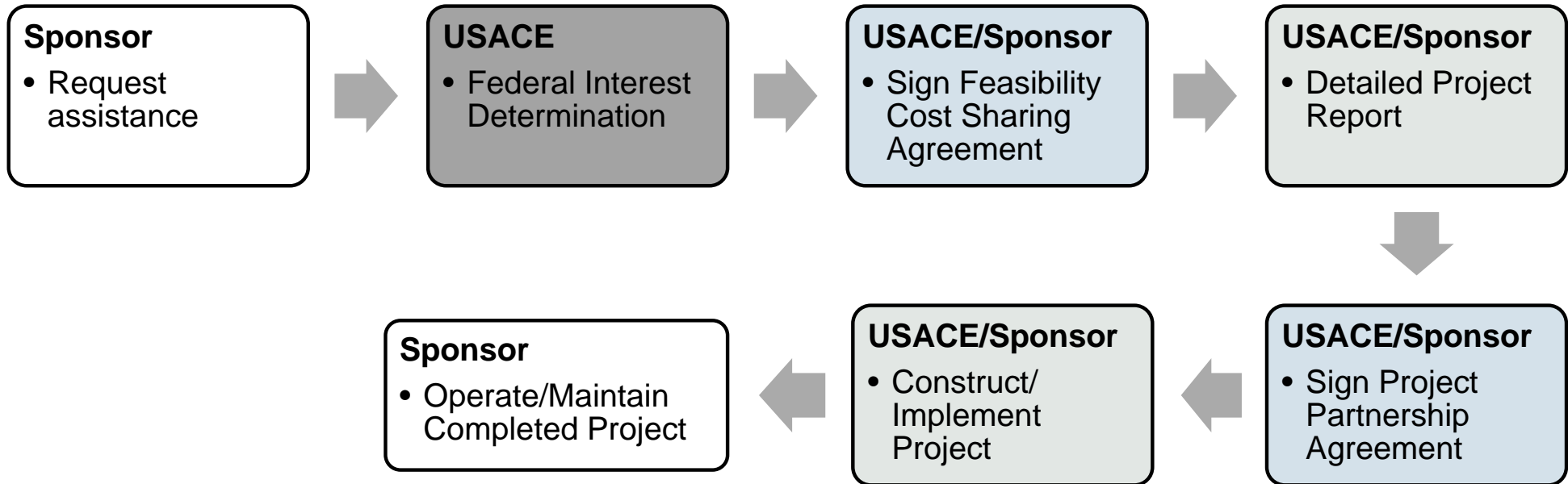


INDIANAPOLIS, WHITE RIVER (NORTH) FLOOD RISK MANAGEMENT





Continuing Authorities Project Process





CONTINUING AUTHORITIES OVERVIEW



Authority	Description	Per Project Cost Limit (\$M)	Per Program Cost Limit (\$M)
Section 14	Emergency Streambank Stabilization	5	25
Section 107	Navigation	10	62.5
Section 205	Flood Risk Management	10	68.75
Section 208	Flood Snagging/Clearing	0.5	7.5
Section 206	Aquatic Ecosystem Restoration	10	62.5
Section 1135	Ecosystem Restoration	10	50



**Feather Creek
Clinton, IN Section 205**



**White River
Anderson, IN Section 205**



OTHER PROGRAMS & AUTHORITIES



- Environmental Infrastructure
(Section 219, 594, 531)
- Planning Assistance to States (Section 22)
- Flood Plain Management Services Program
- Emergency Management (PL 84-99)

Federal and National Partners



FEMA



State, Local, and Educational Partners

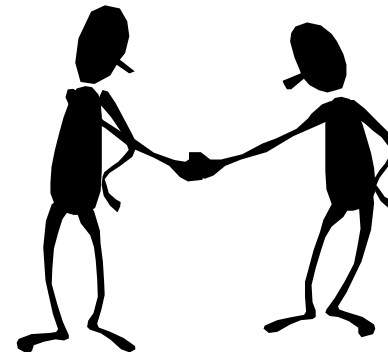
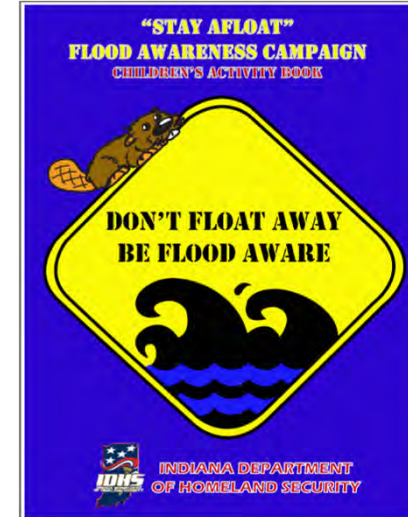




SILVER JACKETS SUCCESSES



- Flood Inundation Mapping
- Statewide LiDAR
- Fluvial Erosion Hazards Program
- Flood Risk Outreach
- Low Head Dam Outreach
- Non-Levee Embankment ID
- Enhanced Relationships
- Many More!





Partners!