



**STRAND**  
ASSOCIATES®

Excellence in Engineering Since 1946

**2019 INAFSM Annual Conference**  
**September 5, 2019**

Make the Most of Your Budget by  
Maximizing Funding Opportunities

**Mark Krenzke, P.E., Strand Associates, Inc.<sup>®</sup>**

*The content of this presentation is not to be downloaded, copied, used, or otherwise transmitted without the prior consent of Strand Associates, Inc.<sup>®</sup>*



## **A Holistic Approach to Project Development Allows You to Accomplish More for Less Money**

- Edinburgh, Indiana – A Case Study
- Communication between Town/City departments allows for collaboration on municipal projects
- Communication between design partners results in cost effective solutions
- Communication with the public sets level of service expectations

## Edinburgh, Indiana – A Case Study

- Population ~ 4,500
- Located at the intersection of Bartholomew, Johnson, and Shelby Counties
- Big Blue River



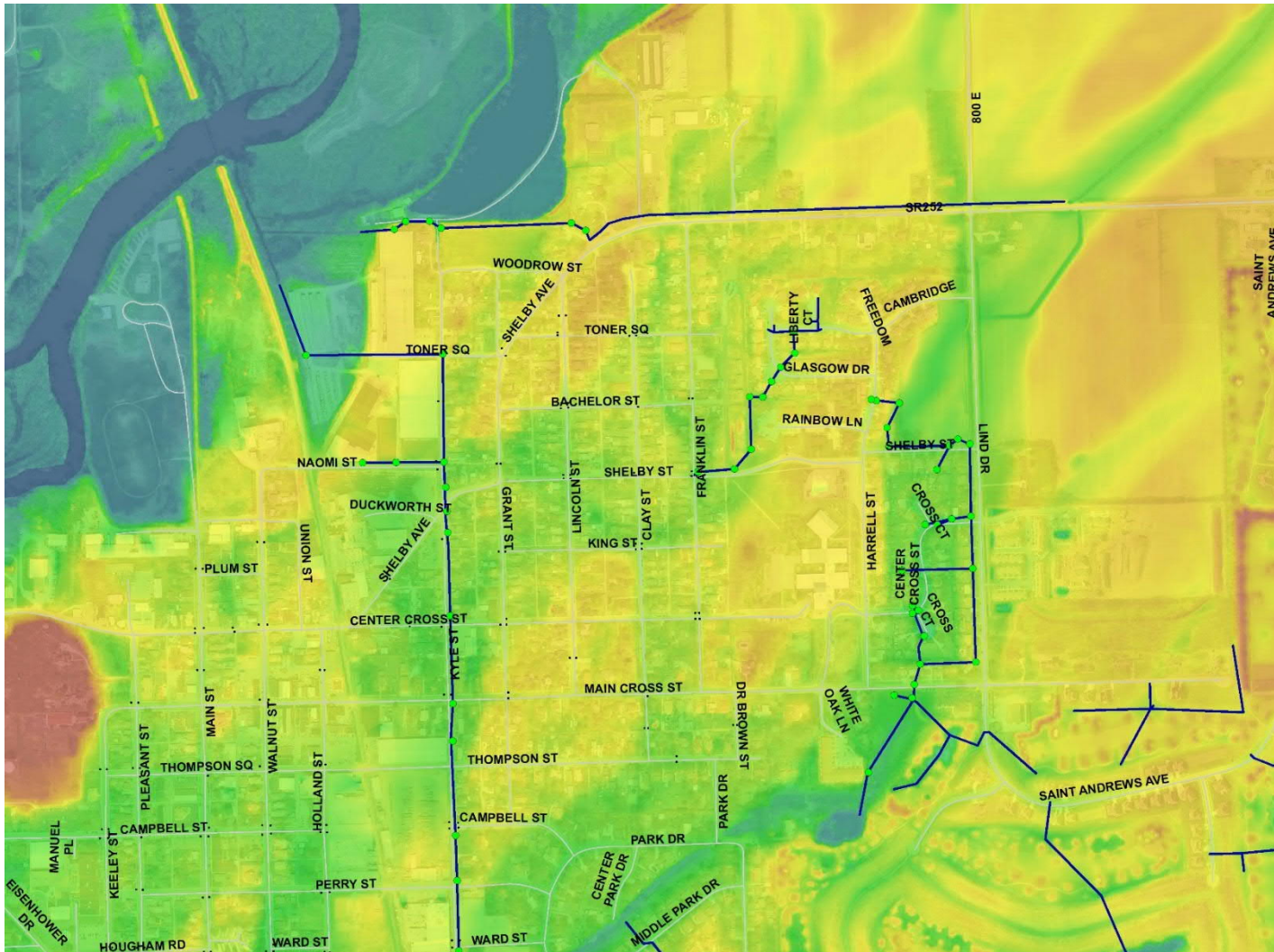
Courtesy of: Strand Associates, Inc.®







# Edinburgh, Indiana – A Case Study cont.



Courtesy of: [https://gis.iu.edu/datasetInfo/statewide/in\\_2011.php](https://gis.iu.edu/datasetInfo/statewide/in_2011.php)

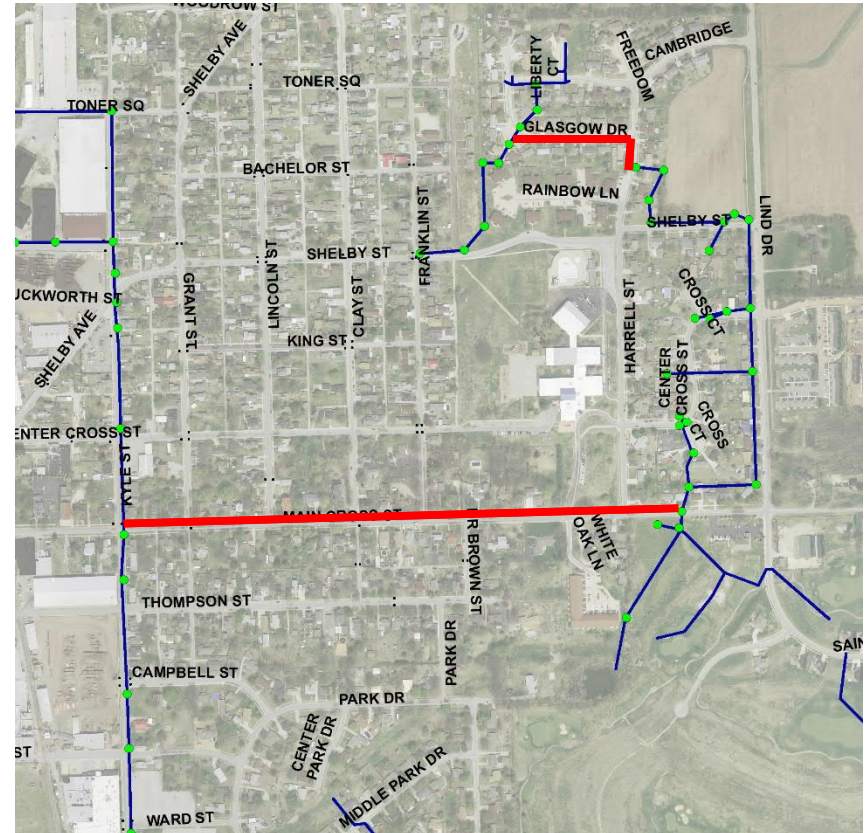


# Edinburgh, Indiana – A Case Study cont.

- OCRA Disaster Relief Grant
- Initial Project Overview
- ~2,590 feet of storm sewer
- Connect drywell system to storm sewer network routed to Big Blue River



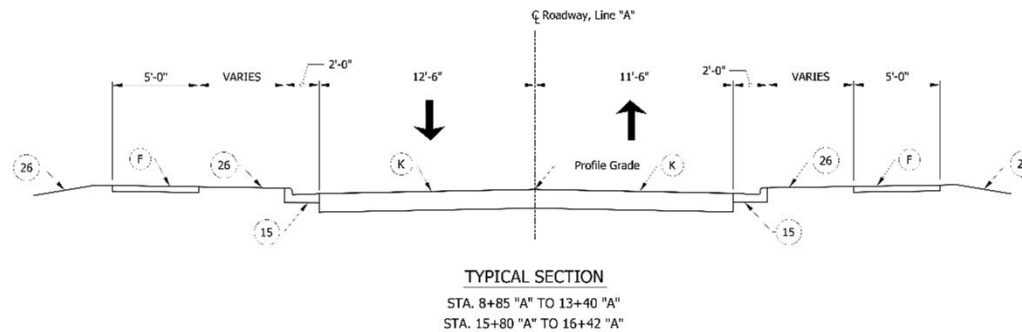
Courtesy of: Strand Associates, Inc.®



Courtesy of: [https://gis.iu.edu/datasetInfo/statewide/in\\_2011.php](https://gis.iu.edu/datasetInfo/statewide/in_2011.php)

# Edinburgh, Indiana – A Case Study cont.

- Other improvements planned for East Main Cross Street
- Restore Curbs
- Replace Sidewalk
- Mill and Resurface Pavement



Courtesy of: Strand Associates, Inc.®

## Edinburgh, Indiana – A Case Study cont.

- The “challenge”
- Budget limited by OCRA grant amount ~ \$858,700
- Minimum scope set to relieve flooding
- Blessing in disguise

## Edinburgh, Indiana – A Case Study cont.

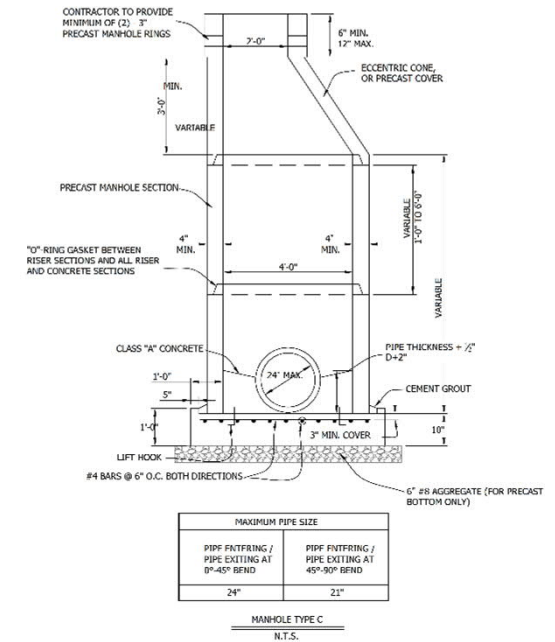
- Apparent that budget would not cover all improvements
- Discussions with Town about phasing road improvements

# Edinburgh, Indiana – A Case Study cont.

- Project #1 - East Side Storm Sewer
- Storm sewer, backfill, and patch only
- Design Considerations to limit cost
- Design Considerations for future improvements



Courtesy of: Strand Associates, Inc.®



Courtesy of: Strand Associates, Inc.®

# Edinburgh, Indiana – A Case Study cont.



*Courtesy of: Strand Associates, Inc.®*

# Edinburgh, Indiana – A Case Study cont.



*Courtesy of: Strand Associates, Inc.®*

# Edinburgh, Indiana – A Case Study cont.



Courtesy of: Strand Associates, Inc.®



Courtesy of: Strand Associates, Inc.®

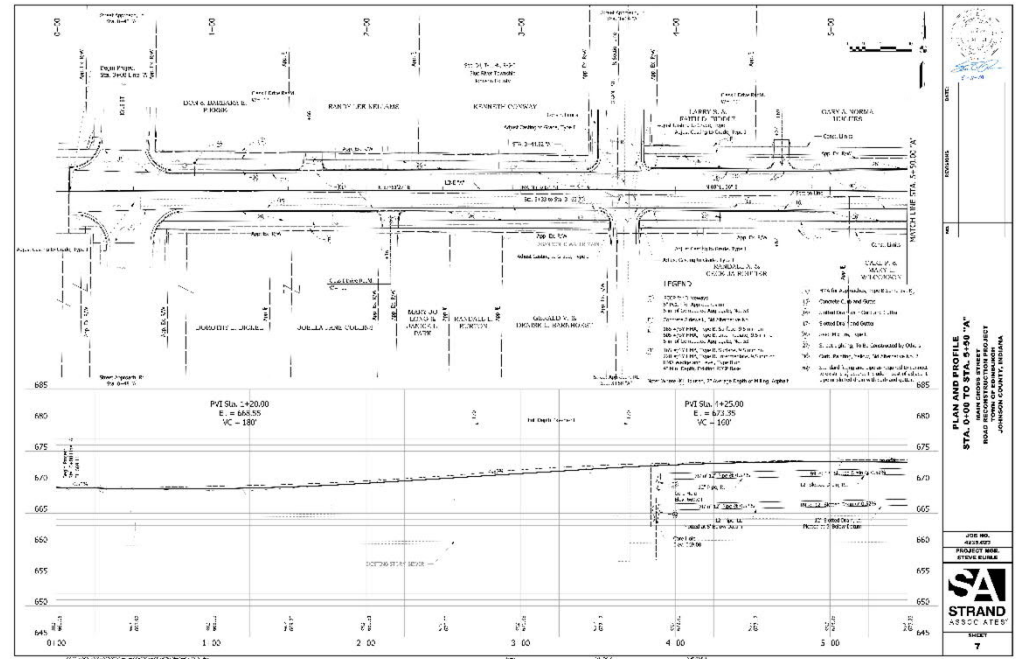


## Edinburgh, Indiana – A Case Study cont.

- East Side Storm Sewer Project – Completed Early 2017
- Post-construction quality not necessarily typical
- Pavement restoration and other improvements deferred until later
- Total Cost: ~\$980,500
- Local Dollars: ~\$123,000

# Edinburgh, Indiana – A Case Study cont.

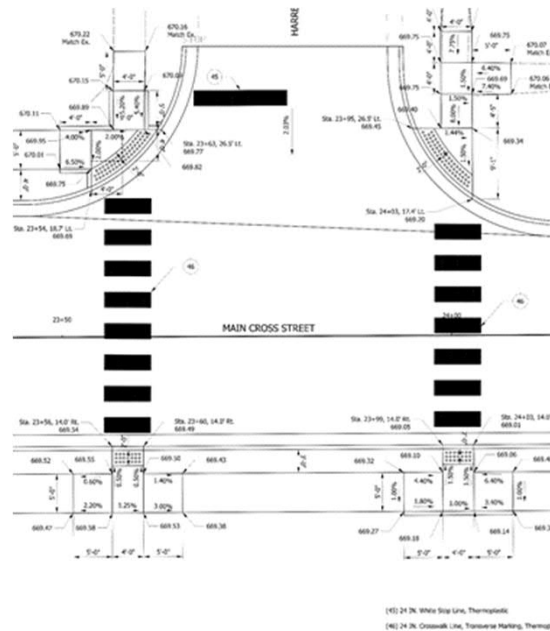
- Project #2 - East Main Cross Street Reconstruction
- Full depth pavement replacement
- Curb and gutter
- Sidewalk and curb ramps
- Casting adjustments



Courtesy of: Strand Associates, Inc.®

# Edinburgh, Indiana – A Case Study cont.

- INDOT Community Crossings Grant
- 25% matching dollars
- Ended up in two phases



Courtesy of: Strand Associates, Inc.®



Courtesy of: Strand Associates, Inc.®

## Edinburgh, Indiana – A Case Study cont.

- East Main Cross Street Reconstruction – To Be Completed Fall 2019
- Total Cost: ~\$1,142,000
- Local Dollars: ~\$432,700



Courtesy of: Strand Associates, Inc.®



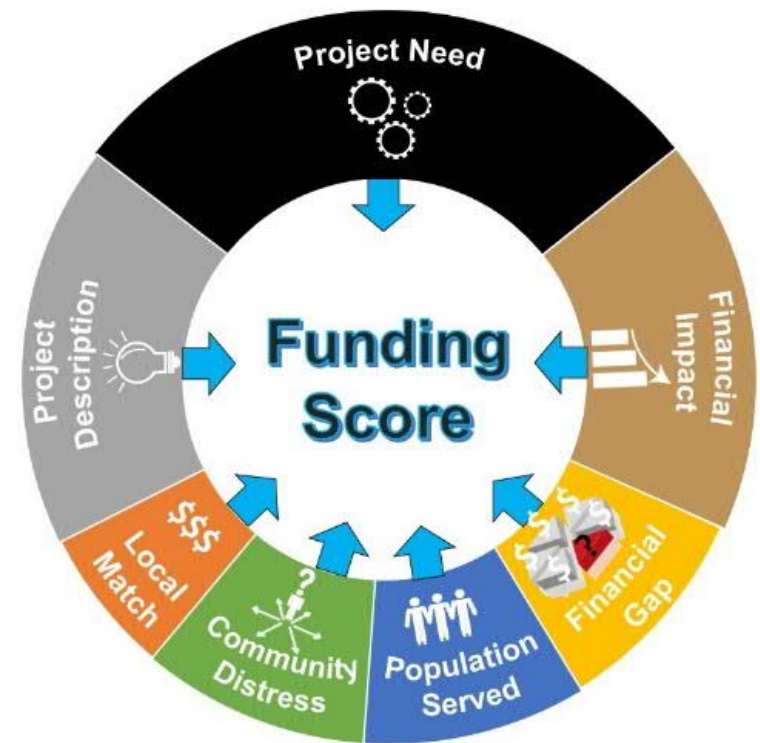
Courtesy of: Strand Associates, Inc.®

## Edinburgh, Indiana – A Case Study cont.

- Full Project Summary
- Spring 2016-Fall 2019
- Total Cost: ~\$2,122,500
- Local Dollars: ~\$555,700 (~26.2%)

## Edinburgh, Indiana – A Case Study cont.

- Current grant opportunities
- OCRA CDBG Stormwater Improvements Program
  - \$600,000 (10% match)
  - 51% Low/Mod. Income
  - Financial Gap
  - Stormwater Utility
  - Regional Planning



# Edinburgh, Indiana – A Case Study cont.

- INDOT Community Crossings
  - Pop. <10,000 = 25% match
  - Pop. <50,000 = 50% match
  - Asset Management Plan
  - Roadway drainage eligible

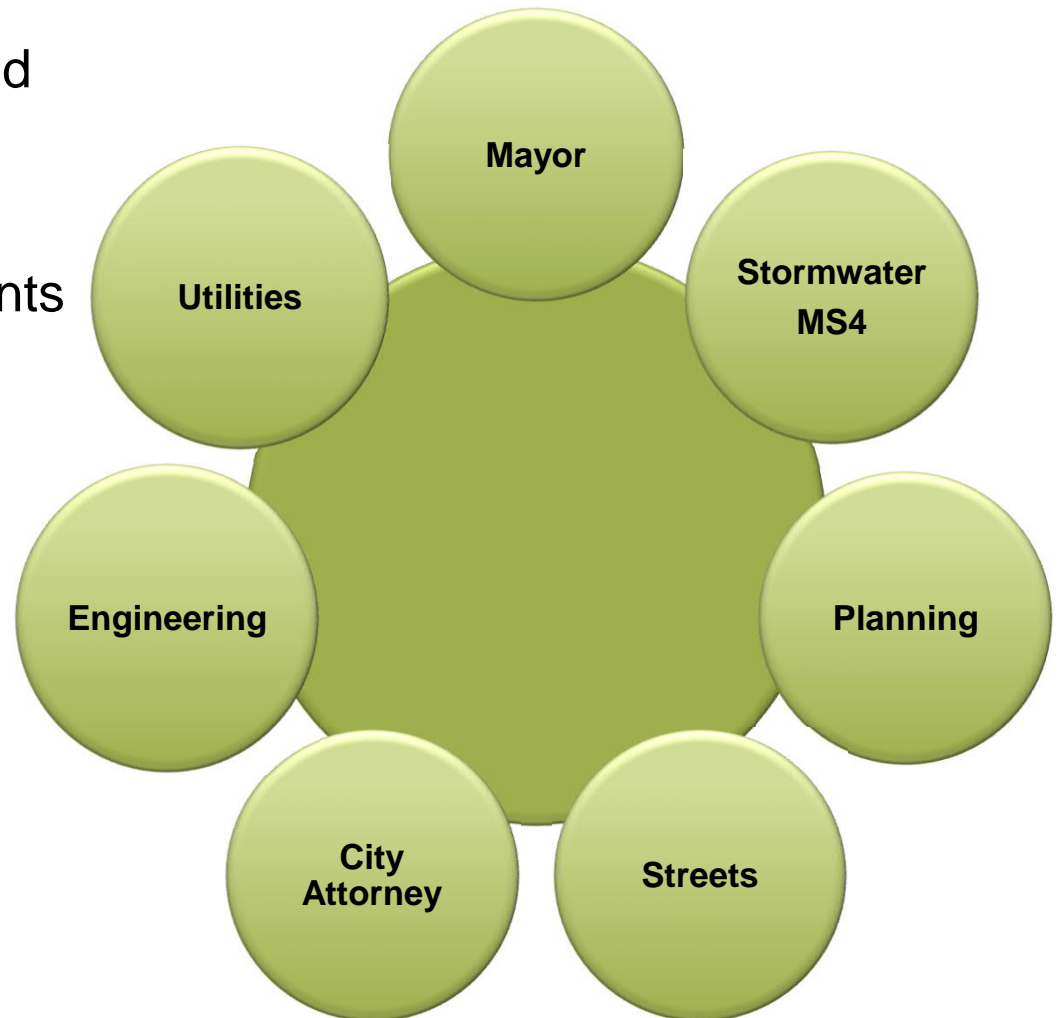
Roadway Name	From	To	Length, feet	Width	Number of Lanes	Surface Type	Rating	Rating Type	Year Rated	Functional Classification
10TH ST	11TH ST	10TH ST	149.06	12	2	Asphalt	7	PASER	2017	Local
10TH ST	10TH ST	RAILROAD ST	307.02	12	2	Asphalt	6	PASER	2017	Local
11TH ST	10TH ST	TERMINUS	38.49	11	2	Asphalt	5	PASER	2017	Local
11TH ST	RAILROAD ST	RAILROAD ST	49.11	15	2	Asphalt	9	PASER	2017	Local
11TH ST	RAILROAD ST	POPLAR ST	202.33	15	2	Asphalt	5	PASER	2017	Local
11TH ST	10TH ST	RAILROAD ST	321.3	11	2	Asphalt	5	PASER	2017	Local
11TH ST	POPLAR ST	PENNSYLVANIA ST	330.14	17	2	Asphalt	4	PASER	2017	Local
2ND ST	RAILROAD ST	RAILROAD ST	58.63	23	2	Asphalt	6	PASER	2017	Minor Collector
2ND ST	EAST ST	PENNSYLVANIA ST	145.79	22	2	Asphalt	7	PASER	2017	Minor Collector
2ND ST	WALNUT ST	RAILROAD ST	155.18	23	2	Asphalt	7	PASER	2017	Minor Collector
2ND ST	WEST ST	WALNUT ST	161.03	20	2	Asphalt	6	PASER	2017	Minor Collector
2ND ST	PENNSYLVANIA ST	CORPORATE LIMIT	173.01	19	2	Asphalt	6	PASER	2017	Minor Collector
2ND ST	RAILROAD ST	POPLAR ST	196.63	27	2	Asphalt	7	PASER	2017	Minor Collector
2ND ST	POPLAR ST	EAST ST	197.53	22	2	Asphalt	7	PASER	2017	Minor Collector
2ND ST	LORNEY ST	HIGH ST	278.48	21	2	Asphalt	6	PASER	2017	Minor Collector
2ND ST	CORPORATE LIMIT	CENTER ST	282.26	21	2	Asphalt	6	PASER	2017	Minor Collector
2ND ST	HIGH ST	WEST ST	447.39	21	2	Asphalt	6	PASER	2017	Minor Collector
2ND ST	CENTER ST	LORNEY ST	452.56	21	2	Asphalt	6	PASER	2017	Minor Collector
3RD ST	WEST ST	WALNUT ST	162.36	13	2	Asphalt	7	PASER	2017	Local
3RD ST	WALNUT ST	RAILROAD ST	162.36	11	2	Asphalt	6	PASER	2017	Local
3RD ST	RAILROAD ST	POPLAR ST	191.85	14	2	Asphalt	5	PASER	2017	Local
3RD ST	HIGH ST	WEST ST	437.62	13	2	Asphalt	6	PASER	2017	Local
525 E	HIGH ST	CORPORATE LIMIT	350.84	14	2	Asphalt	7	PASER	2017	Local
525 E	CORPORATE LIMIT	MILL ST	809.07	20	2	Asphalt	6	PASER	2017	Minor Collector
5TH ST	RAILROAD ST	RAILROAD ST	51.76	14	2	Asphalt	5	PASER	2017	Local
5TH ST	WEST ST	WALNUT ST	158.43	15	2	Asphalt	7	PASER	2017	Local
5TH ST	WALNUT ST	RAILROAD ST	165.4	15	2	Asphalt	6	PASER	2017	Local
5TH ST	RAILROAD ST	POPLAR ST	195.38	15	2	Asphalt	5	PASER	2017	Minor Collector
5TH ST	HIGH ST	WEST ST	448.01	14	2	Asphalt	6	PASER	2017	Local
CENTER ST	2ND ST	HOLLEY ST	279.97	16	2	Asphalt	4	PASER	2017	Local
CENTER ST	HOLLEY ST	HIGH ST	297.44	16	2	Asphalt	4	PASER	2017	Local
EAST ST	2ND ST	INV ST 8	311.2	13	2	Asphalt	6	PASER	2017	Local
EAST ST	INV ST 8	MANLOVE ST	733.16	15	2	Asphalt	5	PASER	2017	Local
HIGH ST	2ND ST	3RD ST	155.4	14	2	Asphalt	6	PASER	2017	Local
HIGH ST	LORNEY ST	MILL ST	160.72	17	2	Asphalt	6	PASER	2017	Local
HIGH ST	MILL ST	2ND ST	164.08	14	2	Asphalt	7	PASER	2017	Local
HIGH ST	TERMINUS	CENTER ST	278.05	14	2	Asphalt	6	PASER	2017	Local
HIGH ST	CENTER ST	LORNEY ST	347.78	16	2	Asphalt	6	PASER	2017	Local
HIGH ST	3RD ST	5TH ST	355.54	14	2	Asphalt	6	PASER	2017	Local

Courtesy of: Strand Associates, Inc.®



# Communication Between Town/City Departments Allows for Collaboration on Municipal Projects

- Critical to have dedicated “project manager” for Owner
- Engage other departments early in the project development phase
- Understand goals and objectives of each dept.
- Keep others informed throughout the design phase





# Examples

- Designate someone to be the facilitator of this type of communication for your community
- Meet with other department heads prior to project kickoff
- Invite applicable department heads to project progress meetings



© Rawpixel.com - stock.adobe.com

# Communication Between Design Partners Results in Cost Effective Solutions

- Select a consultant to be a resource and not just a commodity
- Share the long range plan with team members as early in project as possible
- Discuss phasing options and preference for best design
- Design to the appropriate level of service



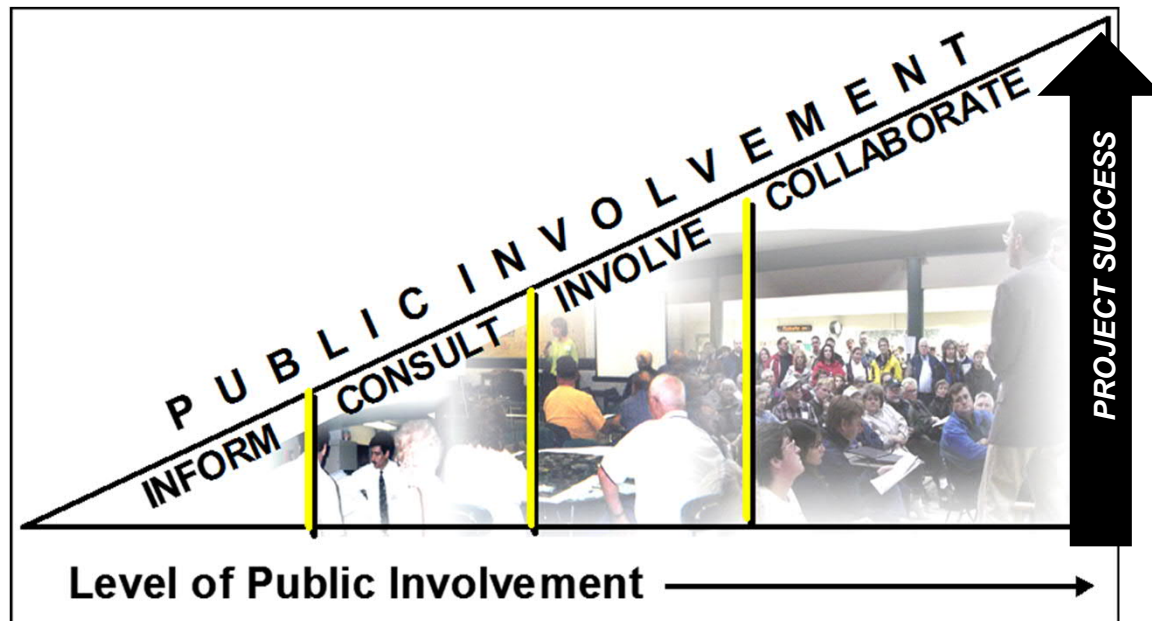
© theseamuss - stock.adobe.com

# Examples

- Qualifications-Based Consultant Selection
  - Most Qualified Firm
  - Promotes Project Quality
  - Less costly overall than selecting on price alone
- Conduct regular planning and design progress meetings with all project partners

# Communication with the Public Sets Level of Service Expectations

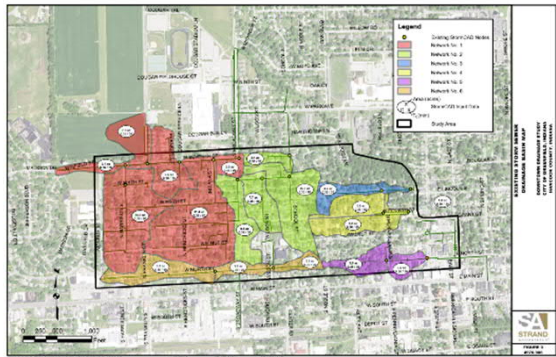
- Share long range plans with the public
- Conduct public open houses during the design phase
- Educate the public about project scope and schedule



As public involvement increases, so do community support and construction grant funding opportunities, leading to greater project success.

# Examples

- Share master plan documents
- Public open houses with all project partners present
- Flyers
- Meet with property owners during construction



Courtesy of: Strand Associates, Inc.®



Courtesy of: Strand Associates, Inc.®



Courtesy of: Strand Associates, Inc.®



## **A Holistic Approach to Project Development Allows You to Accomplish More for Less Money**

- Edinburgh, Indiana – East Main Cross Street Case Study
- Communication between Town/City departments allows for collaboration on municipal projects
- Communication between design partners results in cost effective solutions
- Communication with the public sets level of service expectations

**Questions?**

**Thank You!**

Mark Krenzke, P.E.

mark.krenzke@strand.com

812-372-9911

629 Washington Street

Columbus, IN 47201

