

Mobile GIS Tools for Stormwater Quality Management

Covering your Assets with Mobile Utility Mapping

Mark Butler



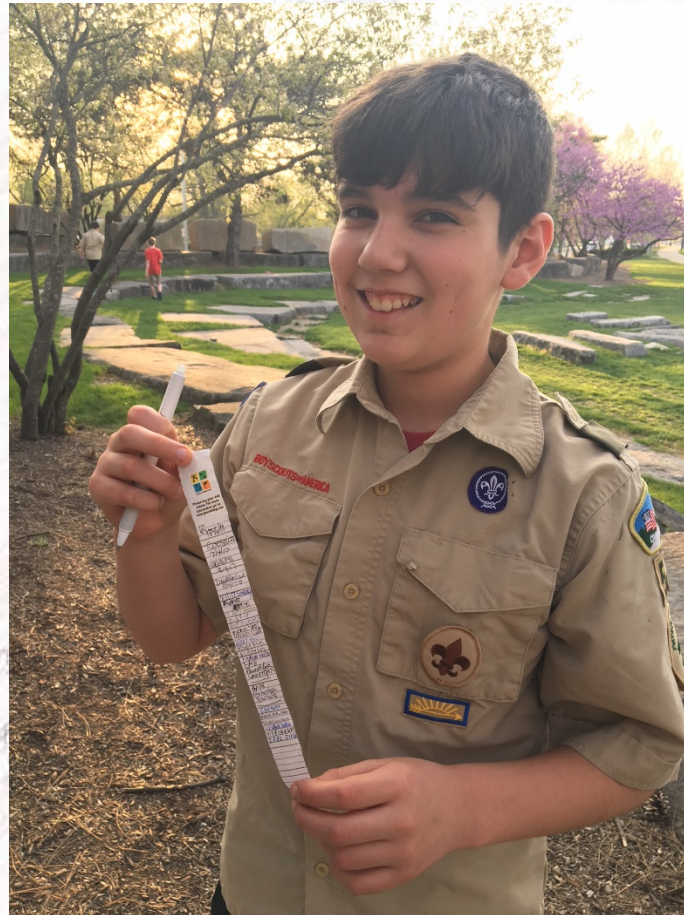
INAFSM 2018
ANNUAL CONFERENCE
SEPT. 5-7 • EVANSVILLE, INDIANA



Geocaching



Geocaching



For Comparison

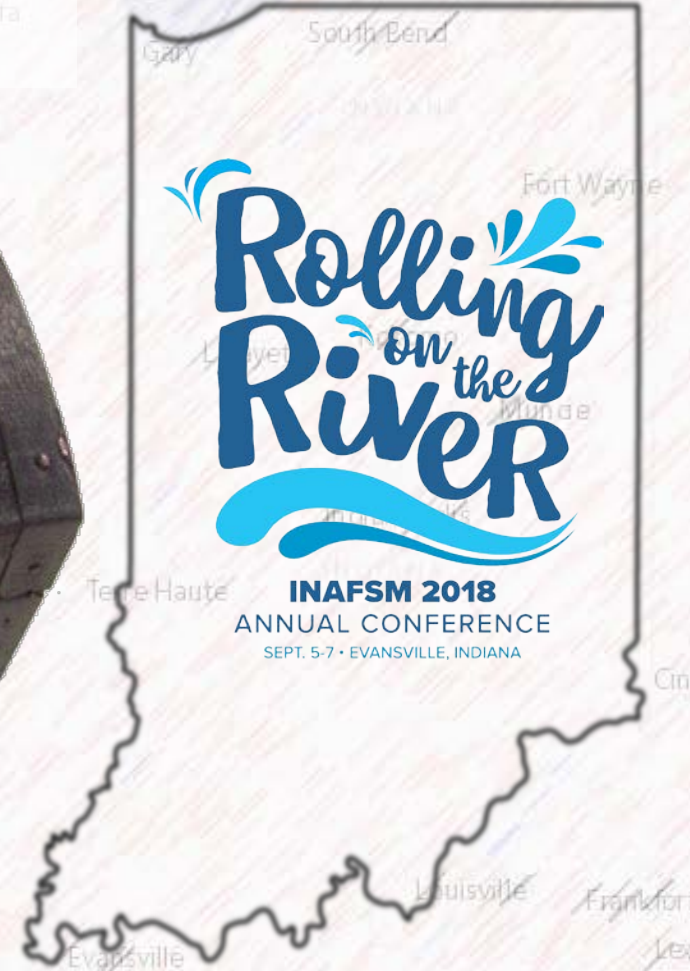


Geocaching

VS



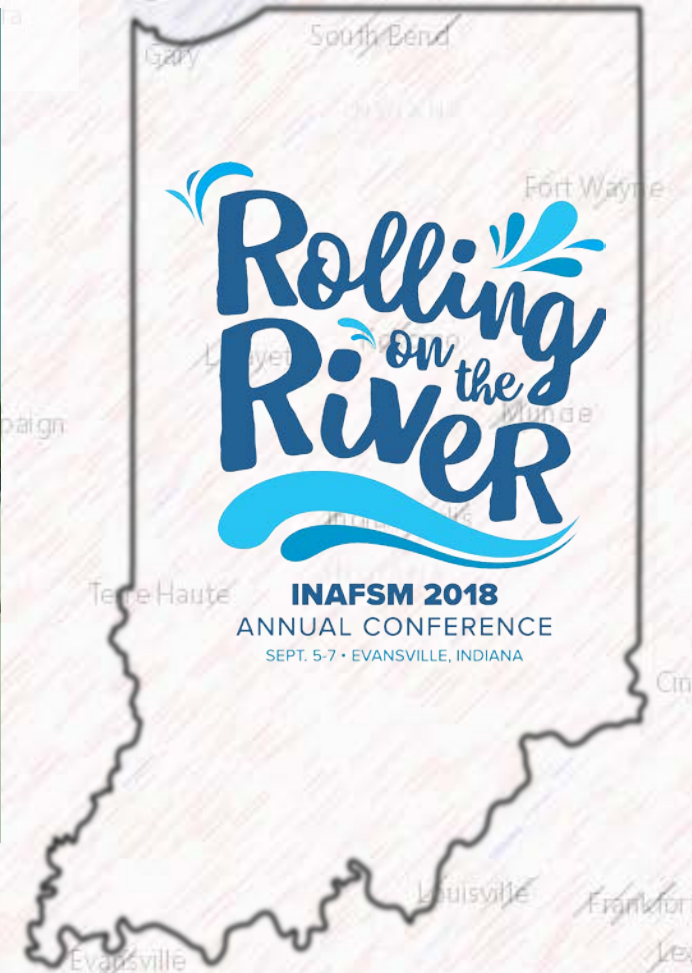
Treasure Hunt



Treasure Hunt



More Hunting.....less Finding



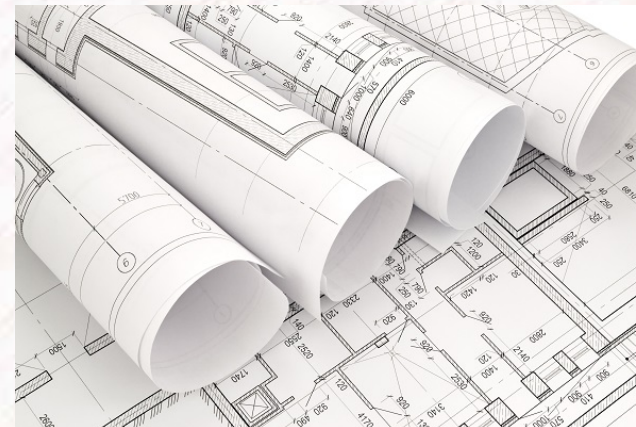
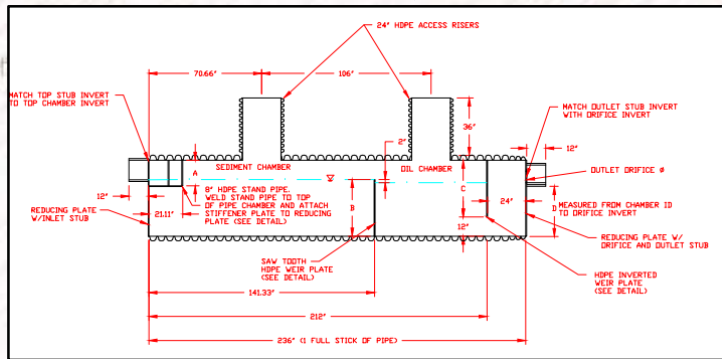
How does this apply to Stormwater
Quality Management ?



INAFSM 2018
ANNUAL CONFERENCE
SEPT. 5-7 • EVANSVILLE, INDIANA



The image displays three US dollar bills stacked vertically. The top bill is a \$100 bill, featuring the number '100' in large blue and green digits, the text 'THE UNITED STATES OF AMERICA', and the portrait of Benjamin Franklin. The middle bill is a \$20 bill, featuring the number '20' in large blue and green digits, the text 'THE UNITED STATES OF AMERICA', and the portrait of Andrew Jackson. The bottom bill is a \$1 bill, featuring the number '1' in large blue and green digits, the text 'THE UNITED STATES OF AMERICA', and the portrait of George Washington. The bills are shown in a slightly overlapping manner, with the \$100 bill at the top, the \$20 bill in the middle, and the \$1 bill at the bottom.



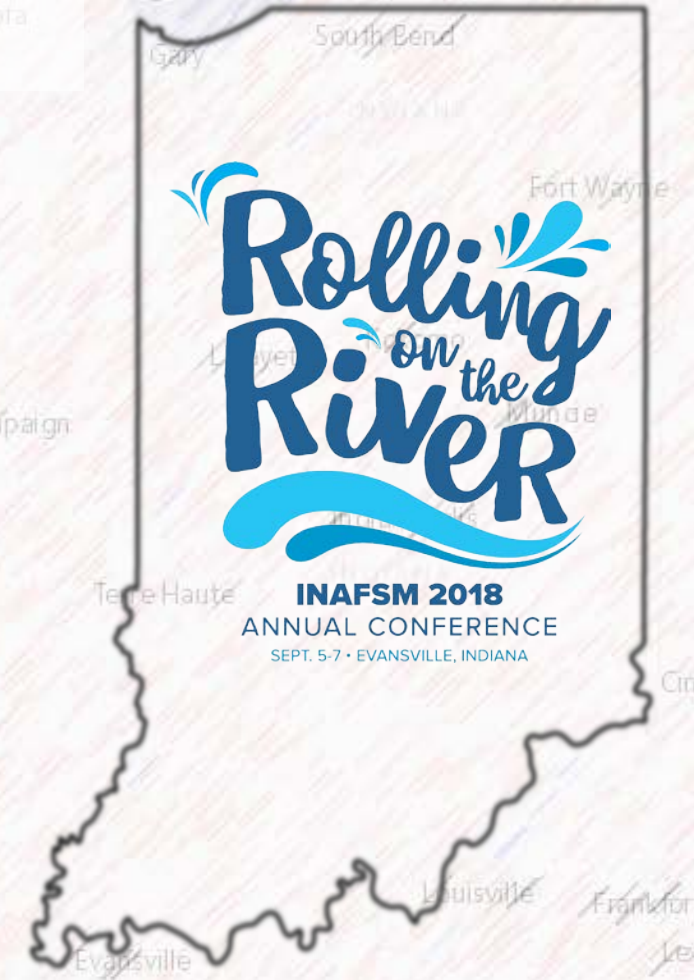
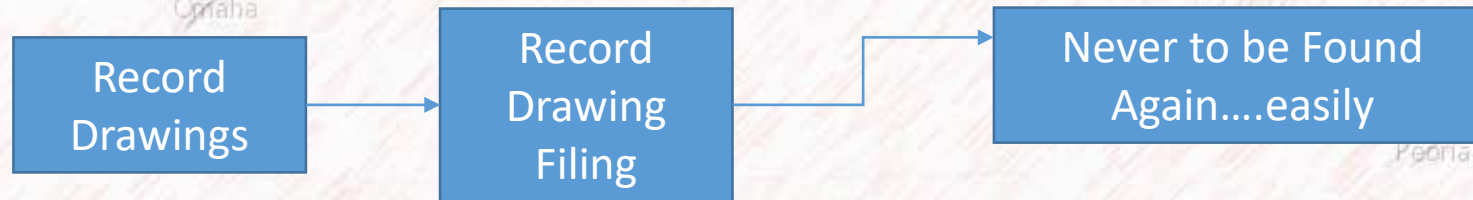
INAFSM 2018
ANNUAL CONFERENCE
SEPT. 5-7 • EVANSVILLE, INDIANA



BANNING
ENGINEERING

https://en.wikipedia.org/wiki/United_States_one-dollar_bill,
<https://www.ads-pipe.com/products/water-quality/ads-hdpe-water-quality-unit-wqu>
<https://www.tarrantcounty.com/en/transportation/engineering.html>
<https://www.conteches.com/Stormwater-Management/Treatment/Stormwater-Management-StormFilter>

Evolution of a Capital Facility



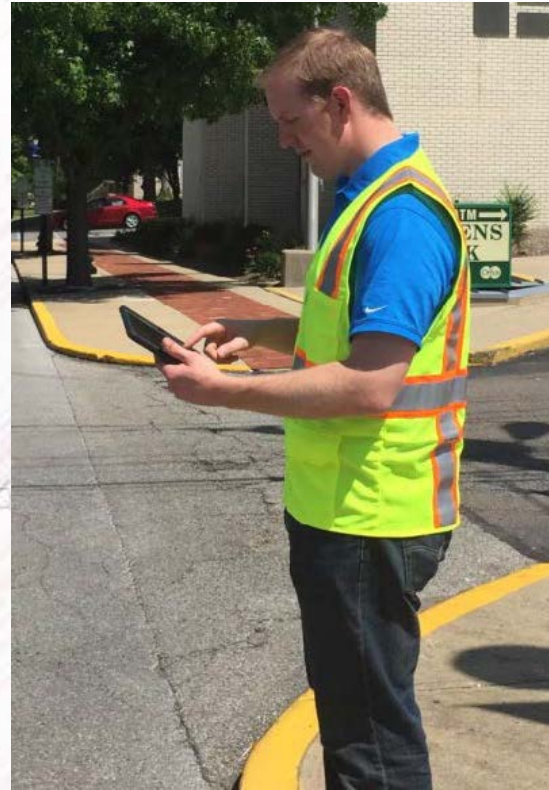
The Problem



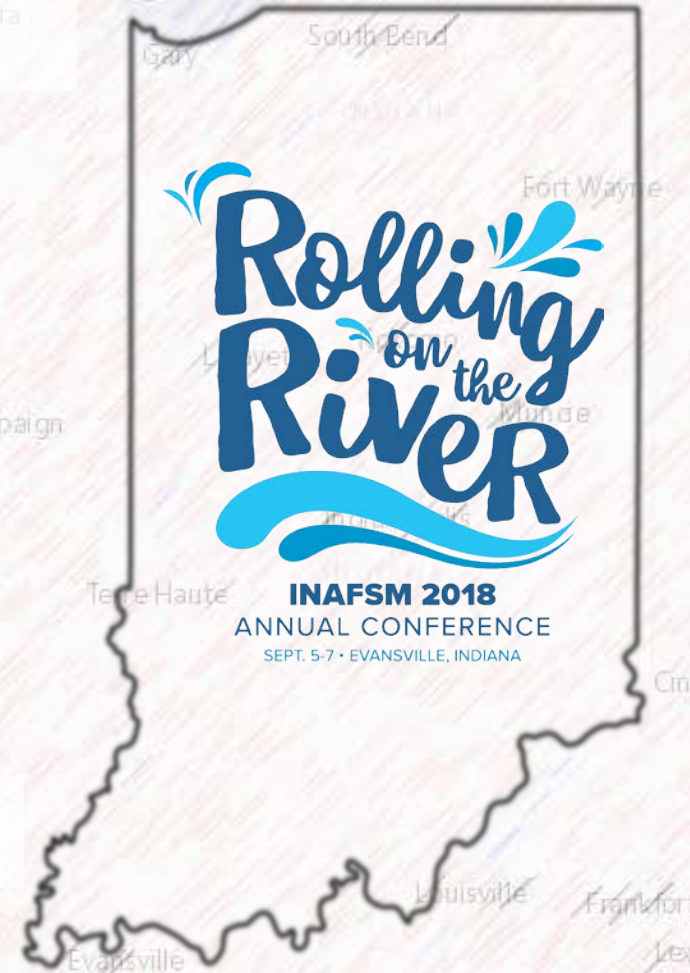
For Comparison



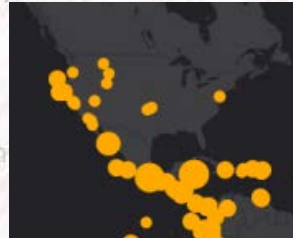
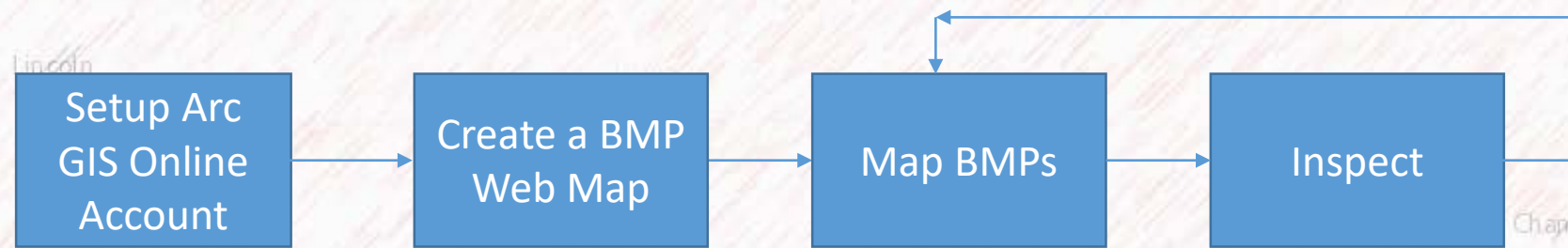
Treasure Hunt for BMP units



“Geocaching” for BMP units



The Process: Overview



INAFSM 2018
ANNUAL CONFERENCE
SEPT. 5-7 • EVANSVILLE, INDIANA

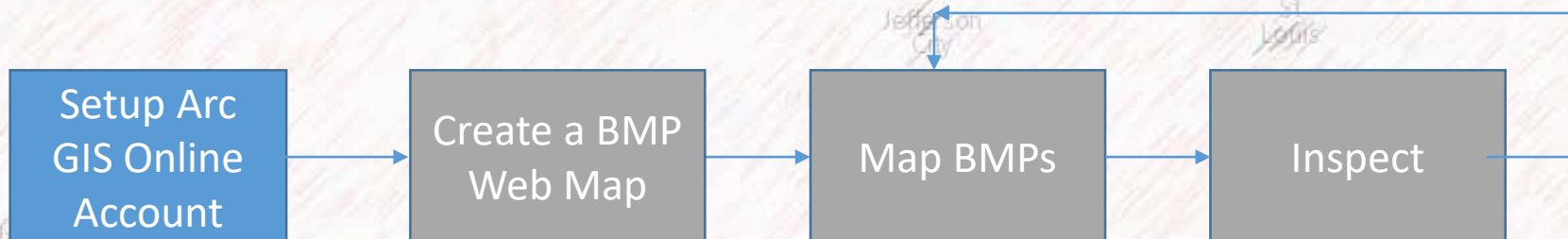
ArcGIS Online Account

Website: <https://www.arcgis.com/home/index.html>

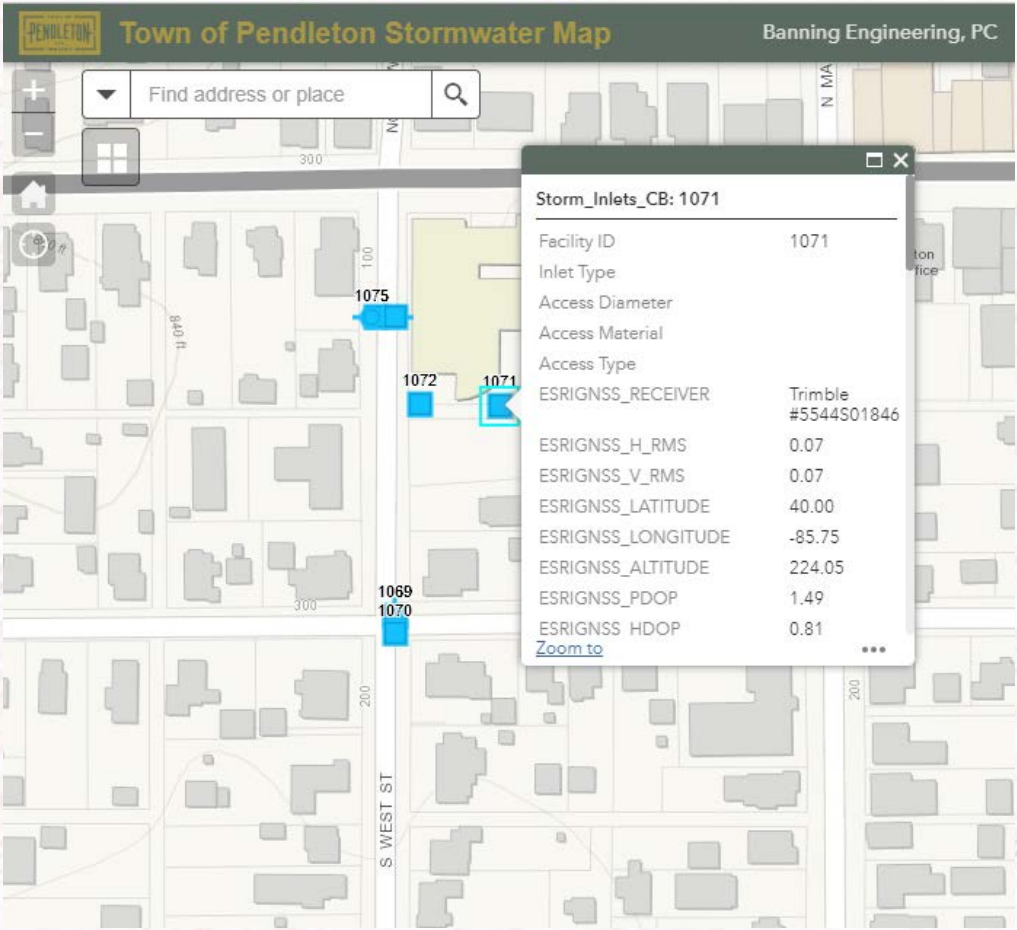
- Security
- Cloud space
- Credits
- Access to Mobile Apps
- Level 2 User = \$500/year



ArcGIS Online



Create a BMP Webmap



Constructed Wetlands Operation, Maintenance, and Management Inspection Checklist for BMP Owners

Site Name: _____ Owner changed since last inspection? Y N

Owner name, address, phone number: _____

Location: _____

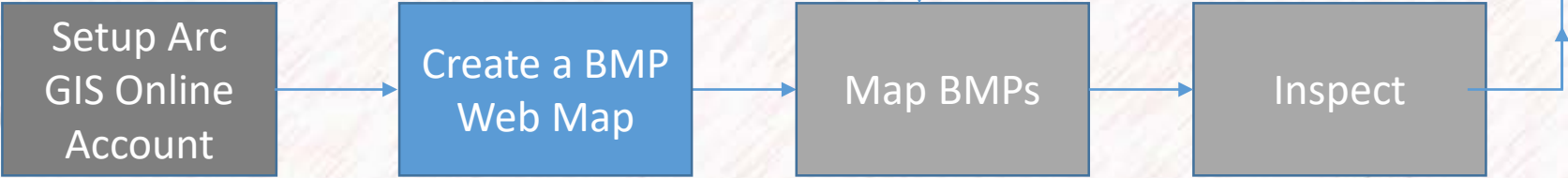
Date: _____

Time: _____

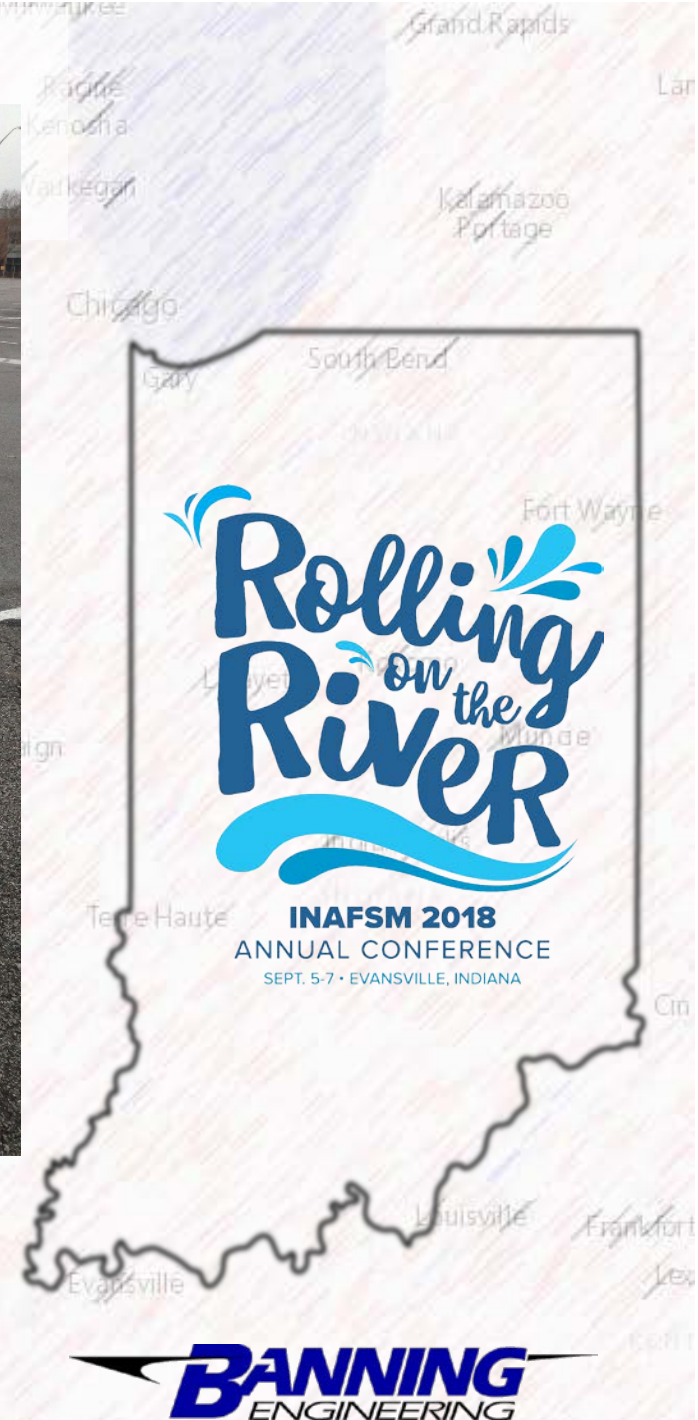
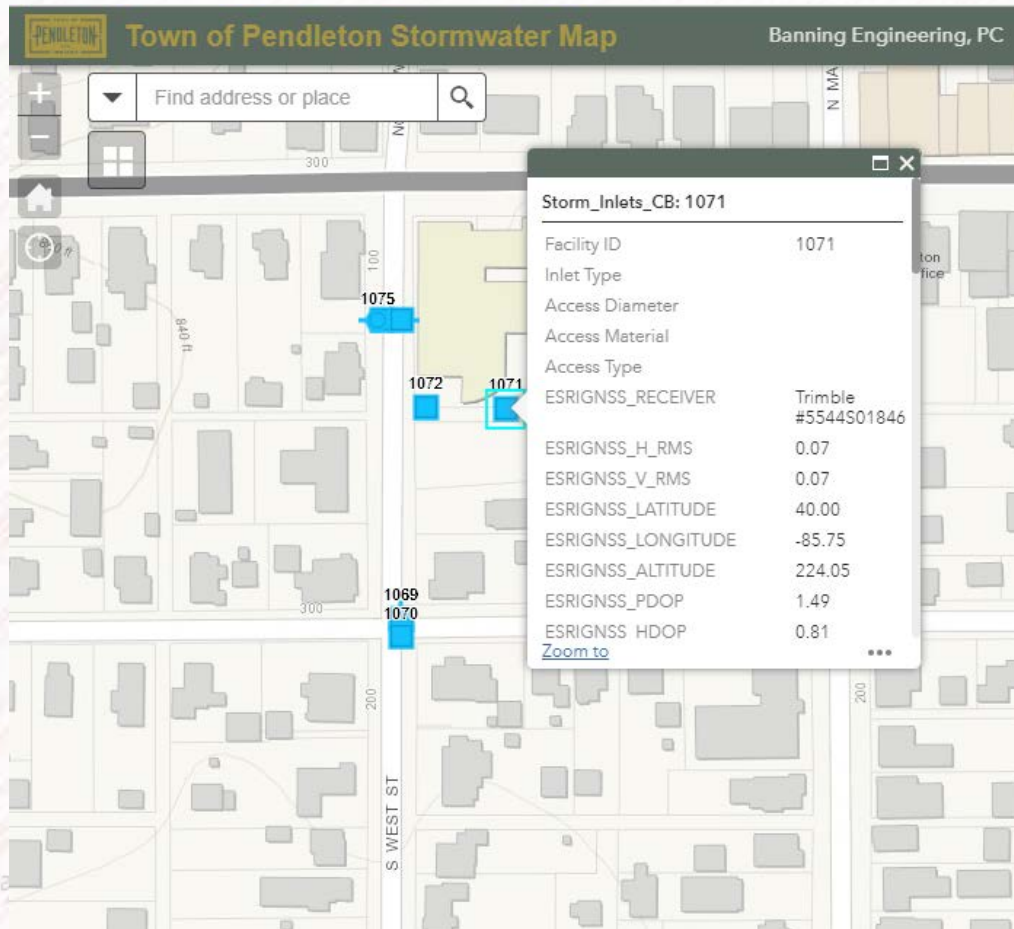
Inspector Name: _____

Maintenance Item	Satisfactory/Unsatisfactory	Comments
Embankment and Emergency Spillway (Inspect annually and after major storms)		
1. Vegetation		
2. Erosion on embankment		
3. Animal burrows		
4. Cracking, bulging or sliding of dam		
A. Location:		
B. Describe		
5. Drains clear and functioning		
6. Leaks or seeps on embankment		
A. Location		
B. Describe		
7. Slope protection failure		
8. Emergency spillway clear of obstructions		
9. Other (describe)		

FIGURE 702-11: Private Operation, Maintenance & Management – Constructed Wetlands



Map the BMPs



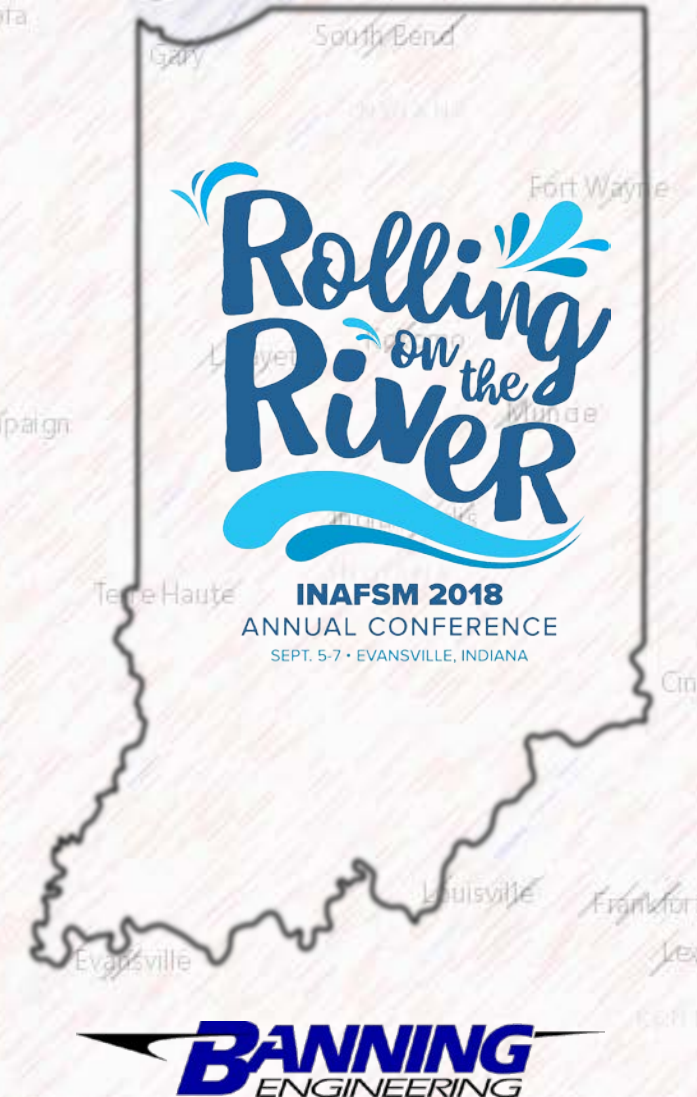
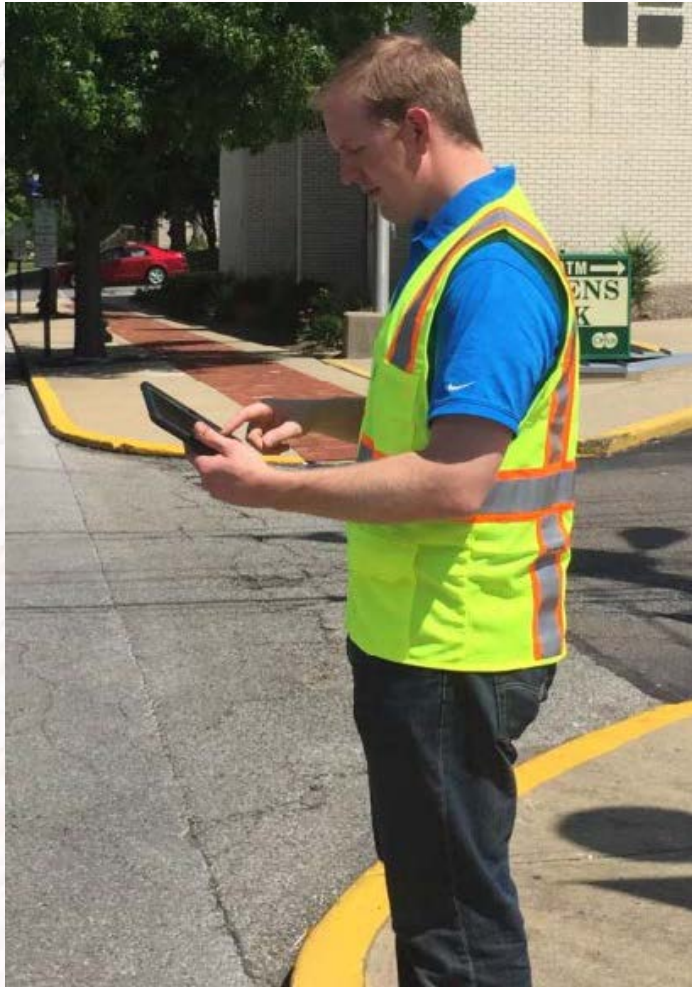
Setup Arc
GIS Online
Account

Create a BMP
Web Map

Map BMPs

Inspect

Routine Inspections



Demo

Town of Pendleton Stormwater System – Using ArcGIS Online and Collector for more than just mapping



INAFSM 2018
ANNUAL CONFERENCE
SEPT. 5-7 • EVANSVILLE, INDIANA



Questions?

Mark Butler, PE
Project Manager
Banning Engineering
mbutler@banning-eng.com
(317) 707-3735

